

Tenor Trombone 2 from Glagolitic Mass (1926)

VII: Organ Solo - VIII: Intrada

Leoš Janáček (1854-1928)

VII: Organ Solo

Allegro ♩ = 152

4 20

ff *pleno* *mf* *cresc.*

34

(cresc.)

Un poco più mosso

(♩ ~ 160)

40

4

49

2

57

71

80

90

100

2 ritard. 4 a tempo

114

accel.

Presto (♩ ~ 168)

125

└ 2 ─



133



140

**Prestissimo**
(♩ ~ 180)

147

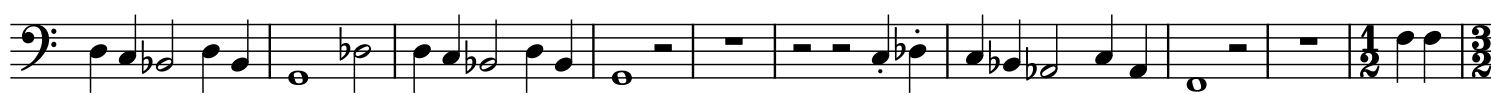
rit.

Adagio**VIII: Intrada**
Moderato ♩ = 88**f**

156



166



176



185



191



201

